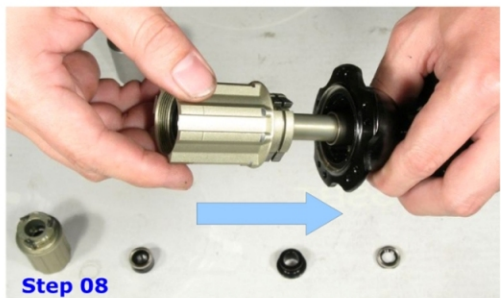
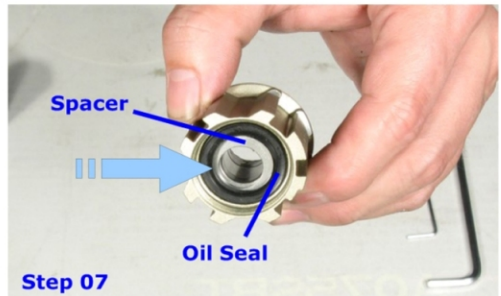
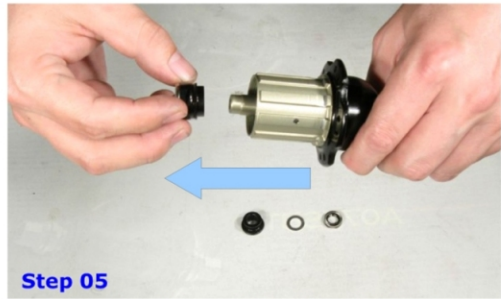
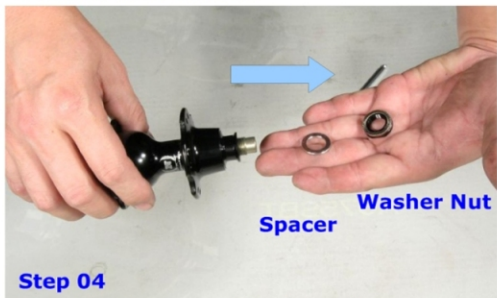
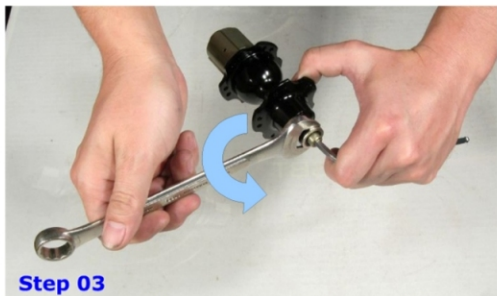


EASY 3in1 SYSTEM

from Shim F372SB, F172SB, F162SB
to Campy F472SB, F272SB, F262SB



EASY 3in1 SYSTEM

from Shim F372SB, F172SB, F162SB
to Campy F472SB, F272SB, F262SB



Step 09

Place the driver side cap on the driver side axle.



Step 13

Now tighten the washer nut by hand in clockwise direction.



Step 10

Screw drive side cap by hand in clockwise direction.



Step 14

Then tighten the hub by using wrench key in clockwise direction.



Step 11

Insert the non-driver side cap on the non-driver side threaded axle.



Step 15

Hold still allen key & tighten the non-driver side washer nut by wrench key in clockwise direction.



Step 12

Place the washer nut back.



Step 16

Job is done & we have hub with Campy cassette body, ready to use.